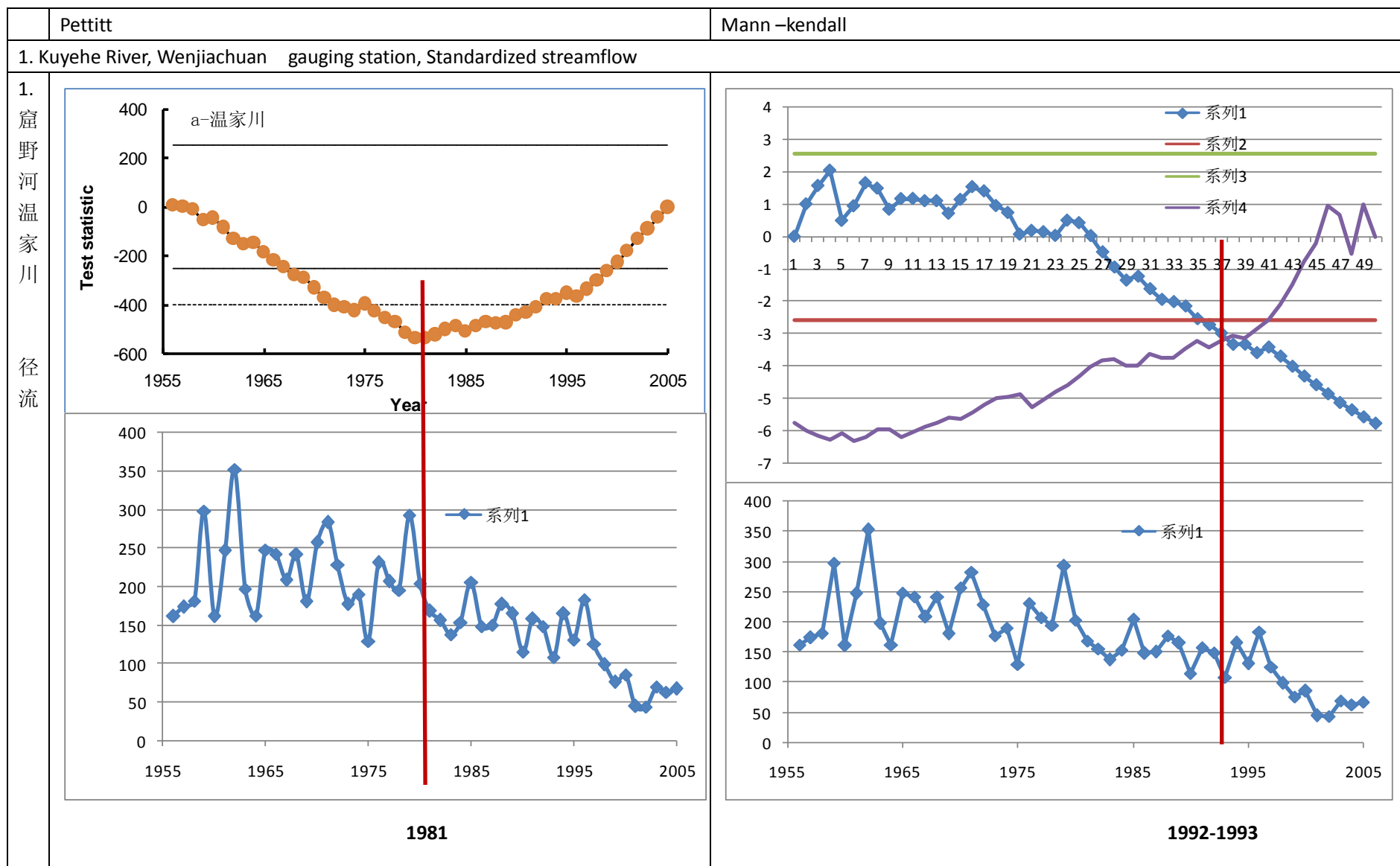
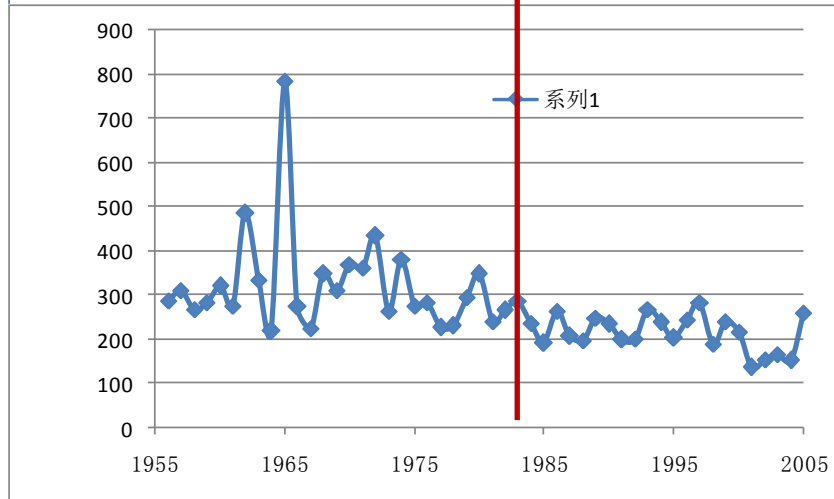
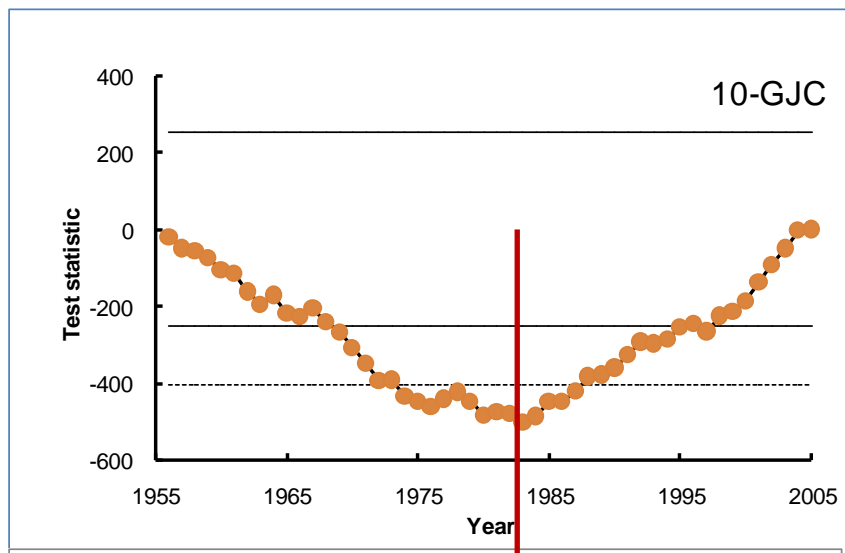


Supplementary file 1 "Comparison of change points detected using Pettitt test and sequential Mann-Kendall test":
Standardized streamflow

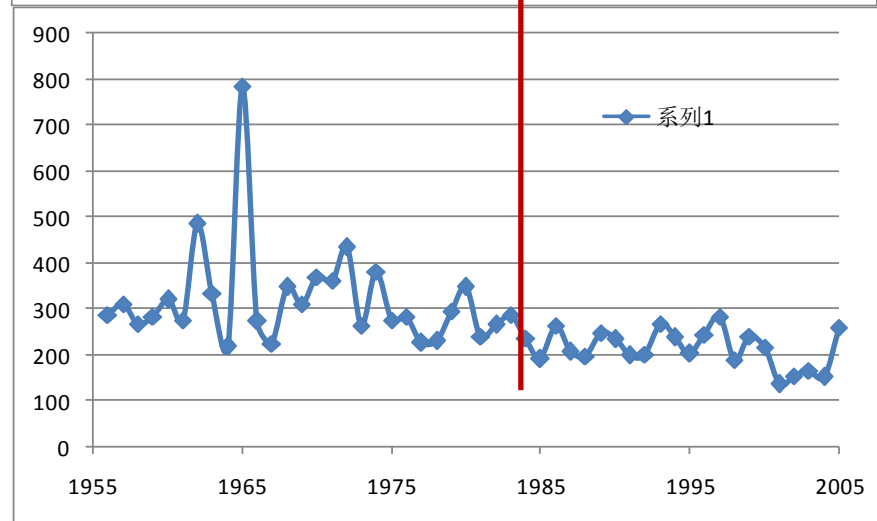
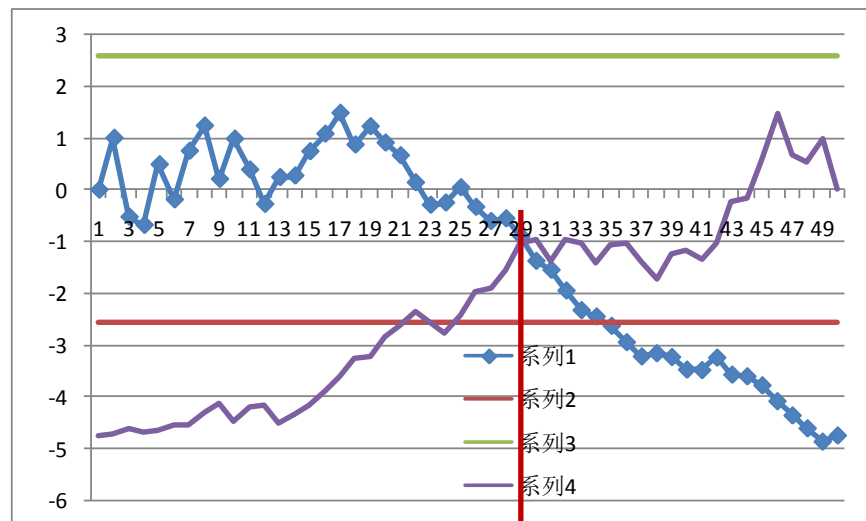


2. Tuweihe River Gaojiachuan gauging station, Standardized streamflow

2. 秃尾河高家川
径流



1983

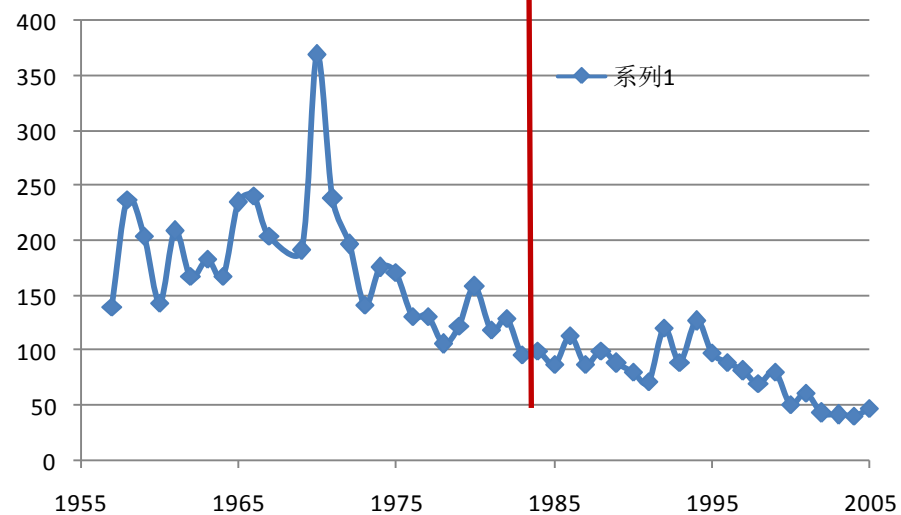
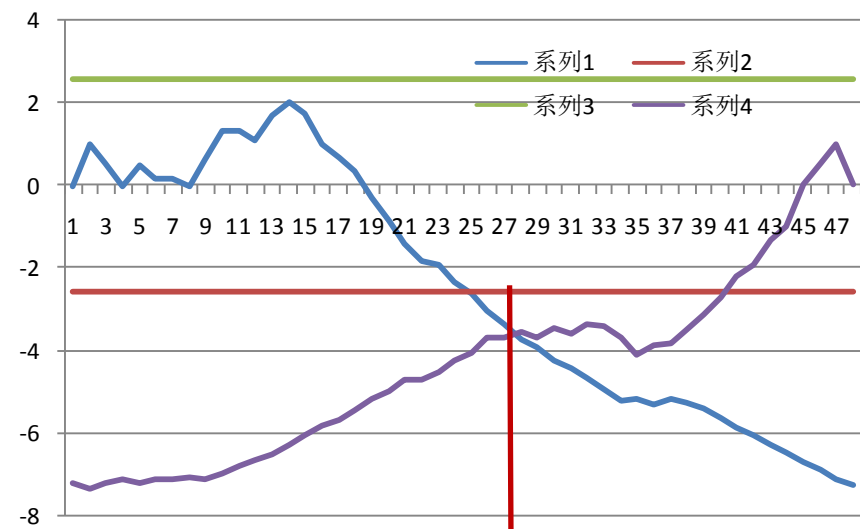
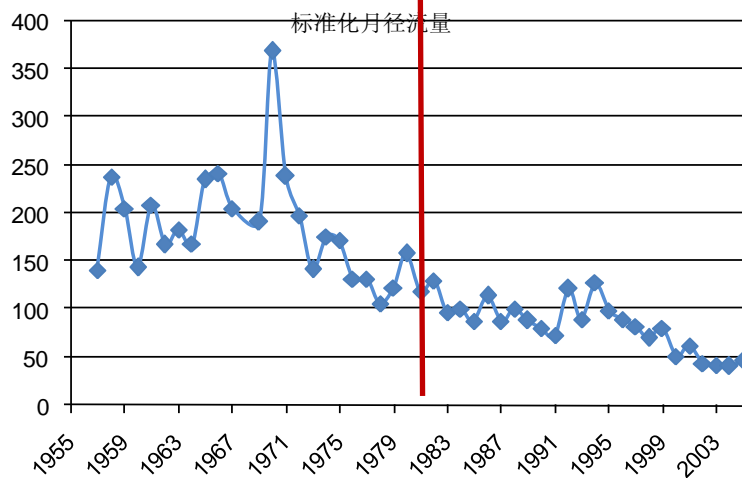
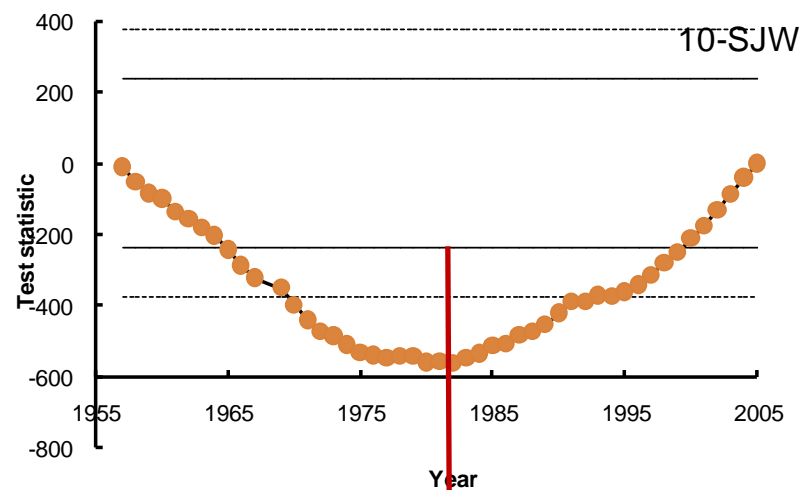


1984

3. Jialuhe River Shenjiawan gauging station, Standardized streamflow

3. 佳芦河申家湾

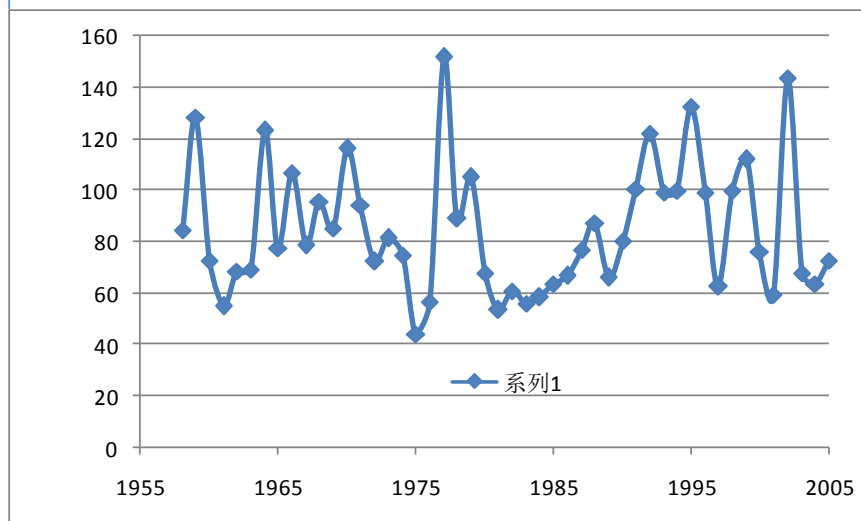
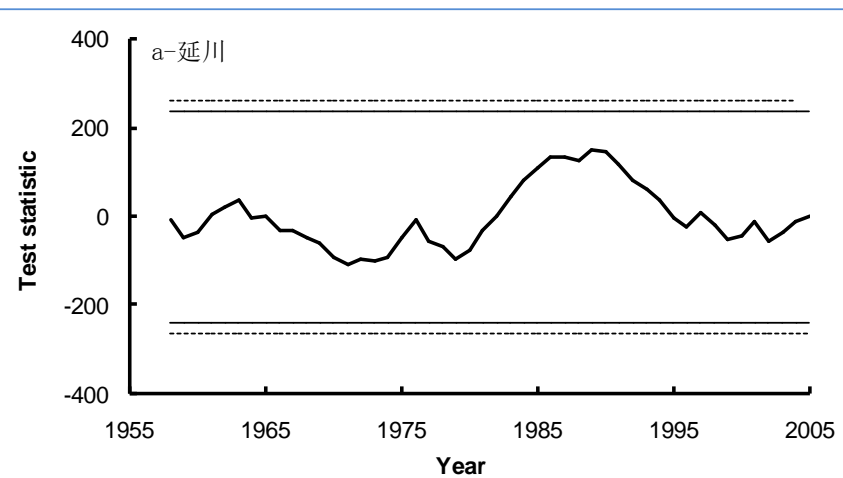
径流



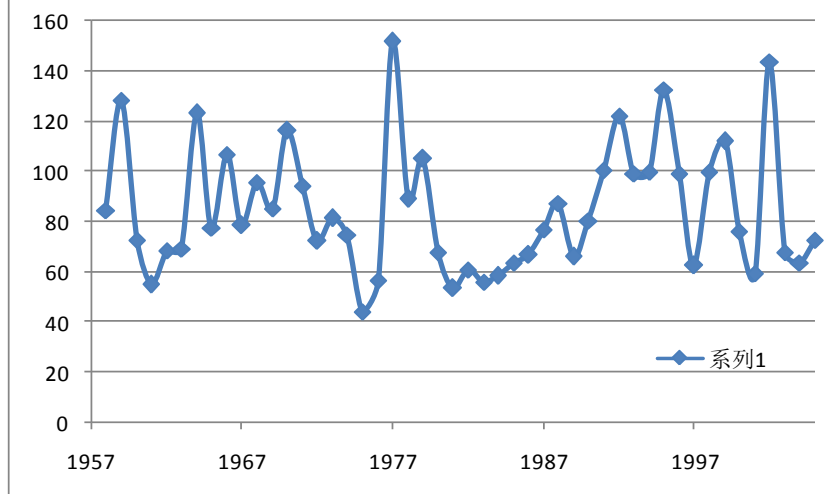
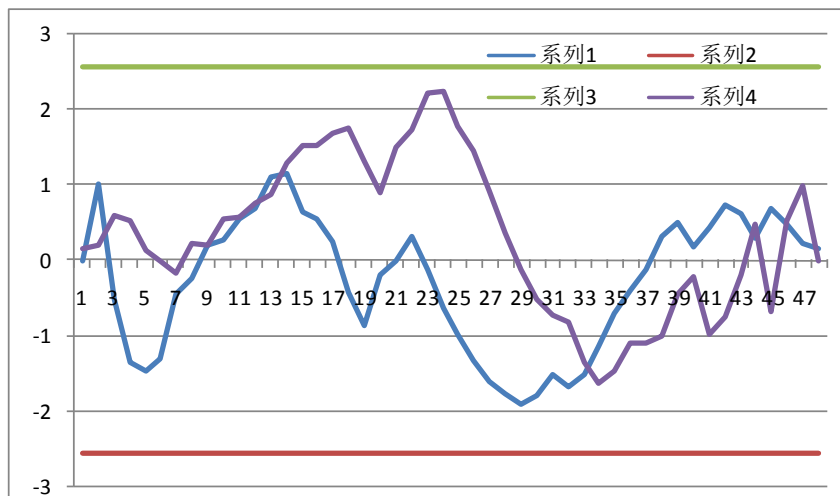
4. Qingjianhe River Yanchuan gauging station, Standardized streamflow

4. 清
涧
河
延
川

径
流



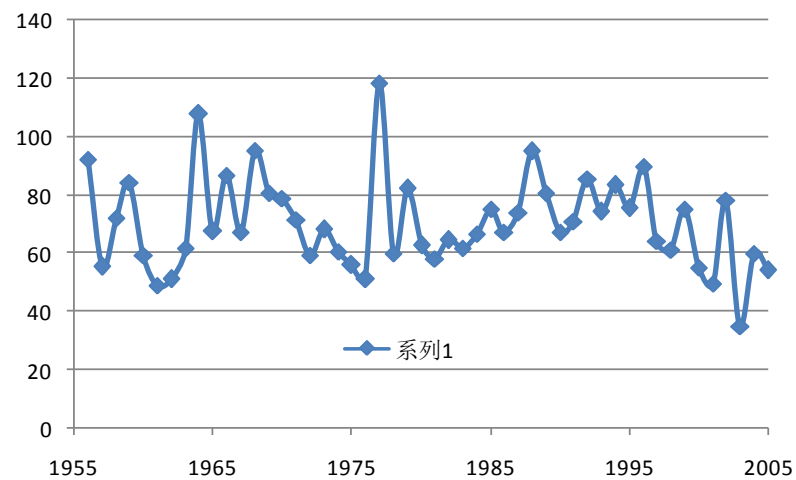
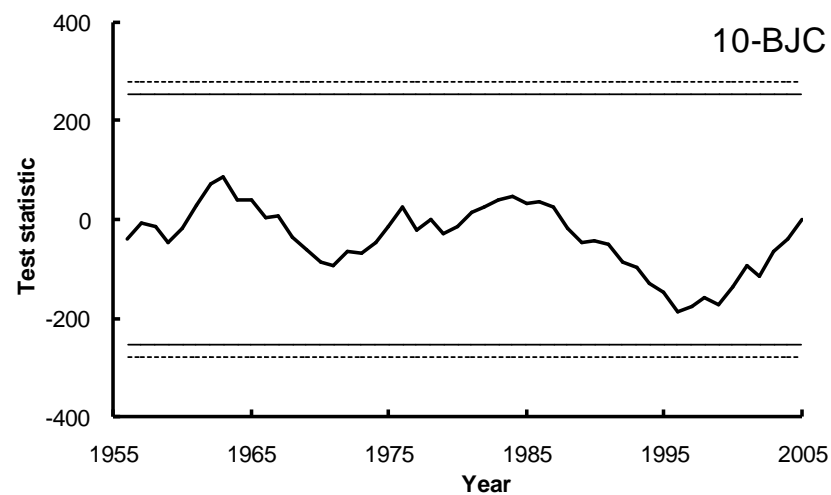
No change point detected



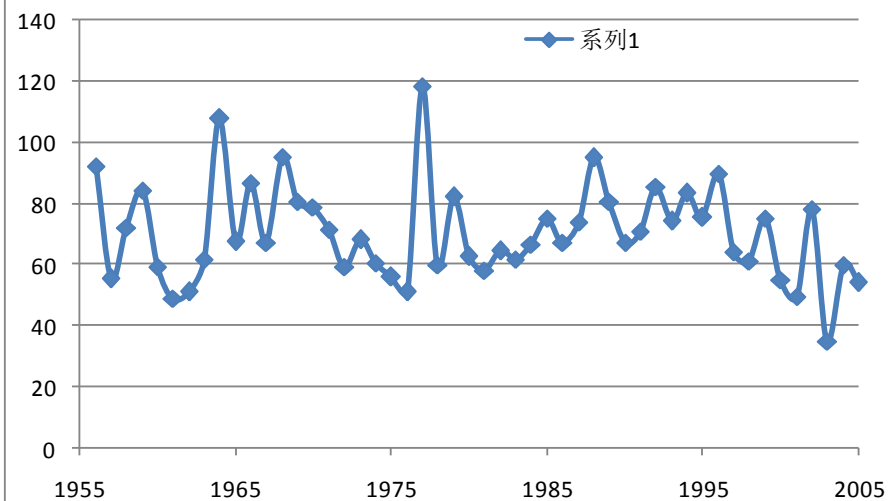
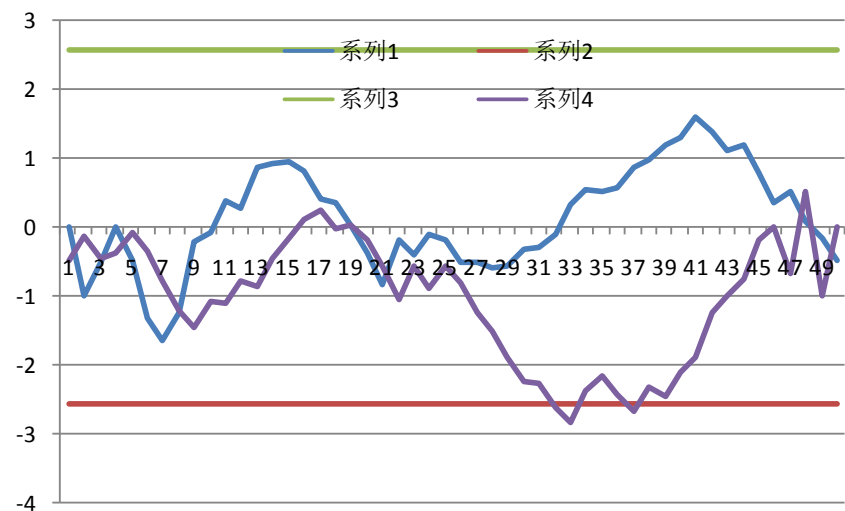
No change point detected

5. Yanhe River Ganguyi gauging station, Standardized streamflow

5. 延河甘谷驿 径流



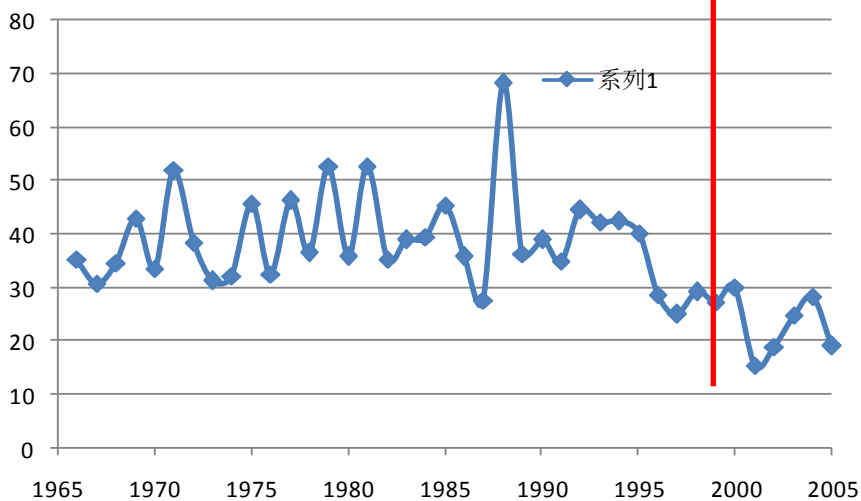
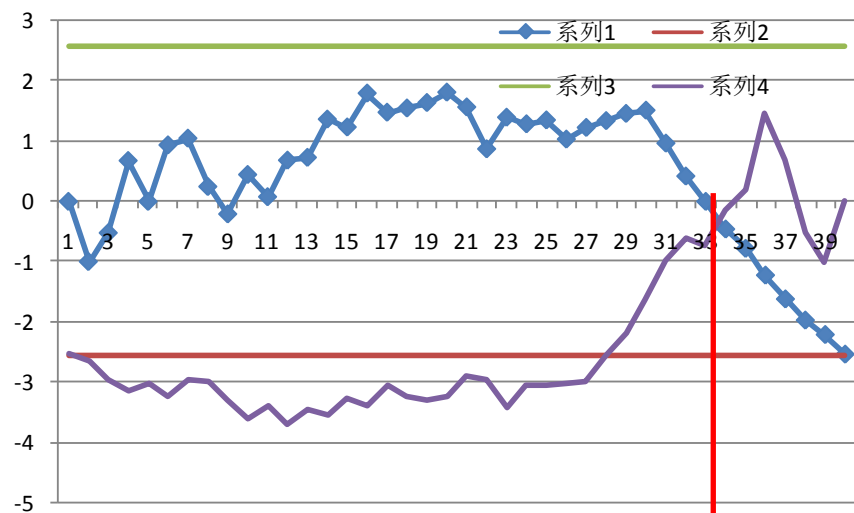
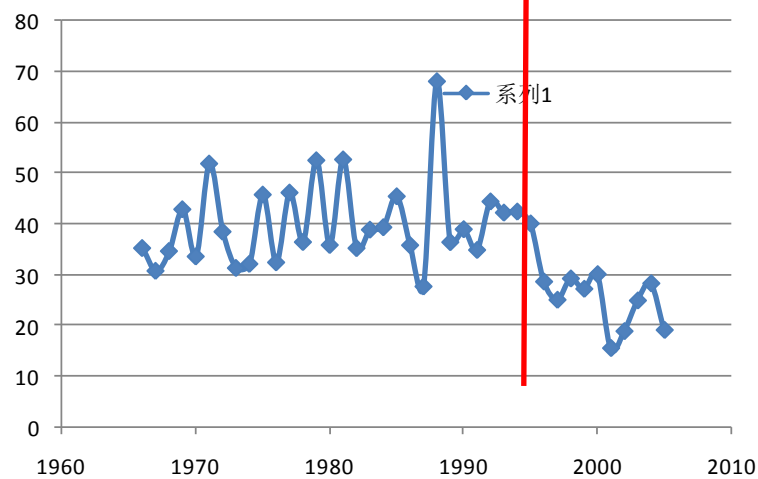
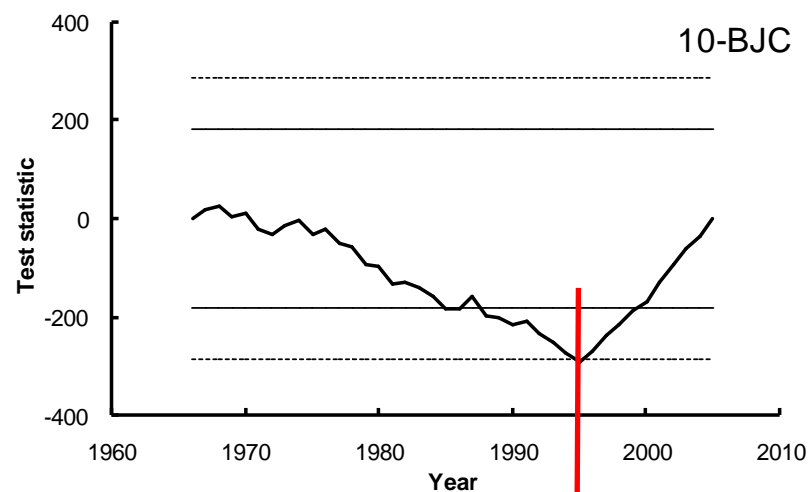
No change point detected



No change point detected

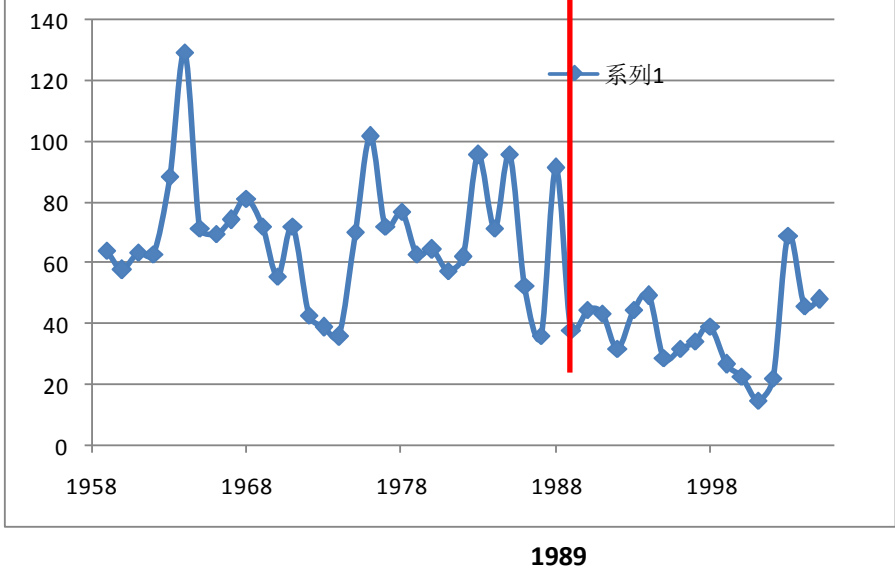
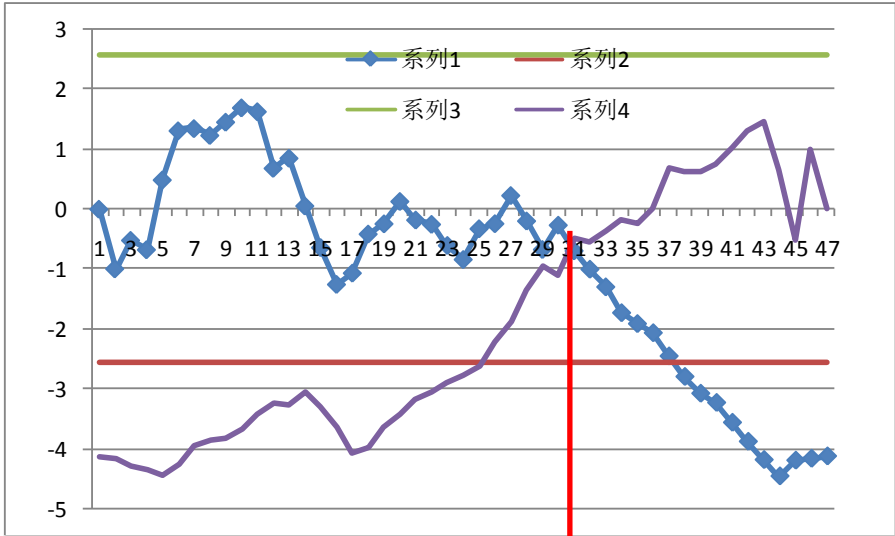
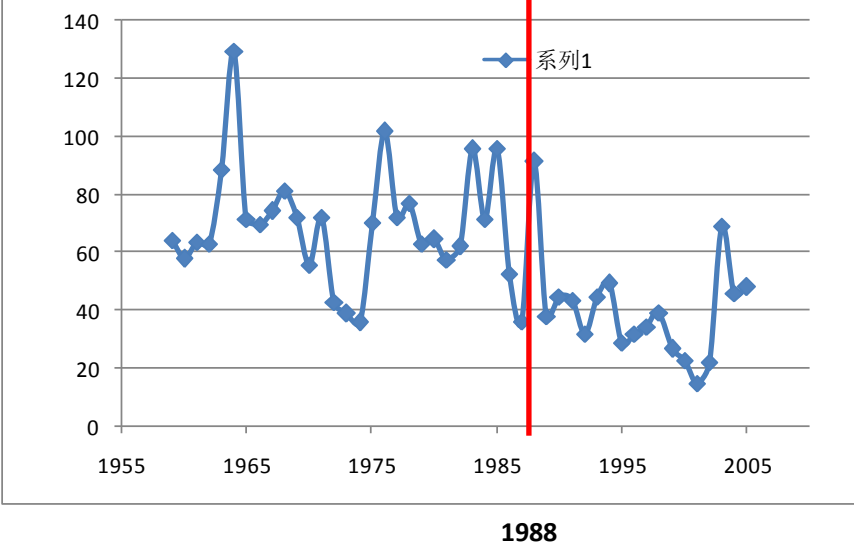
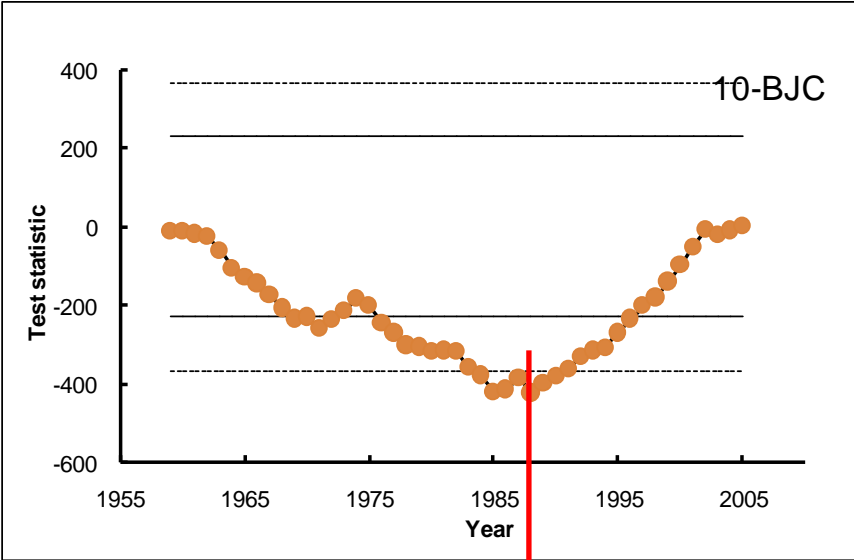
6. Yunyanhe River , Standardized streamflow

6. 云岩河
径流

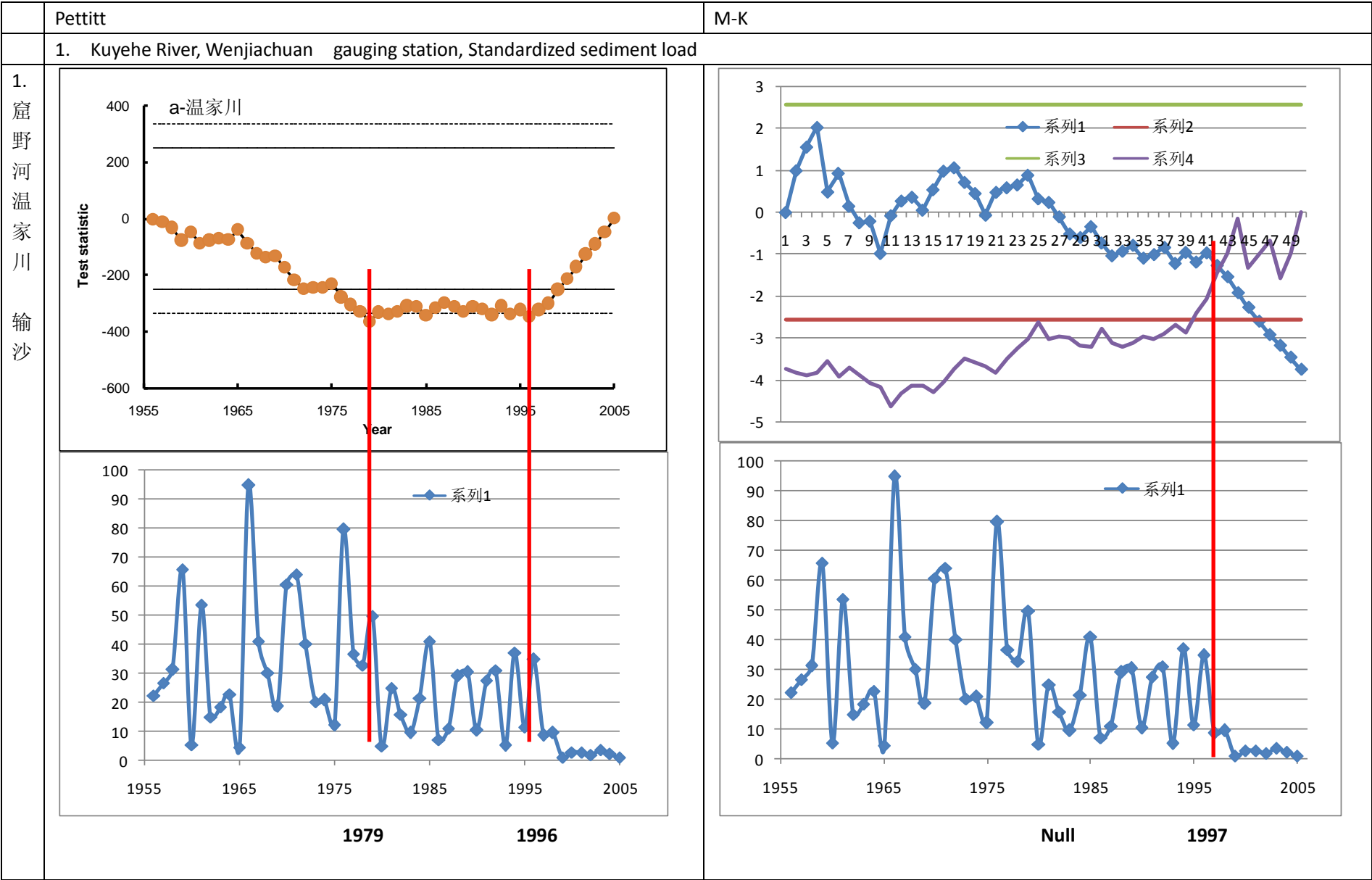


7. Shiwangchuan River , Standardized streamflow

7. 仕望川
径流

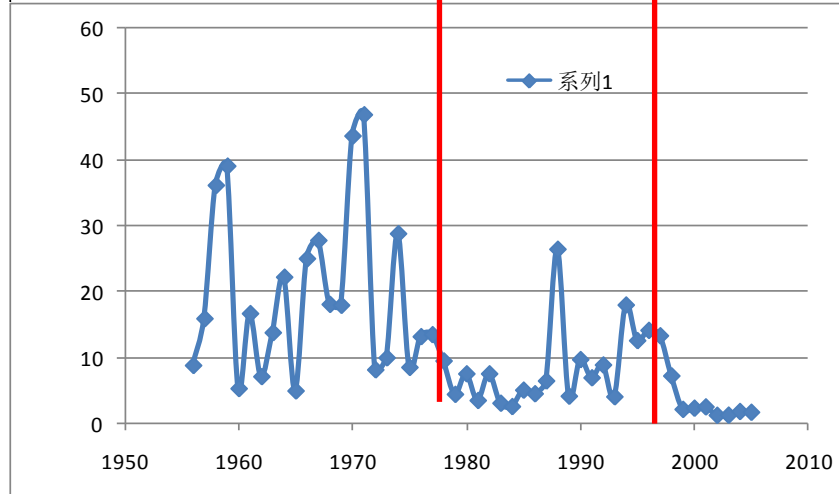
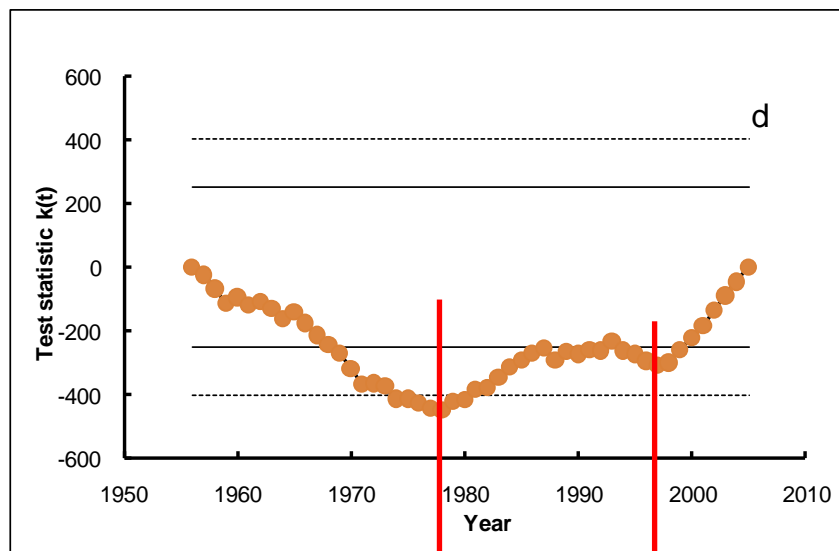


Standardized sediment load



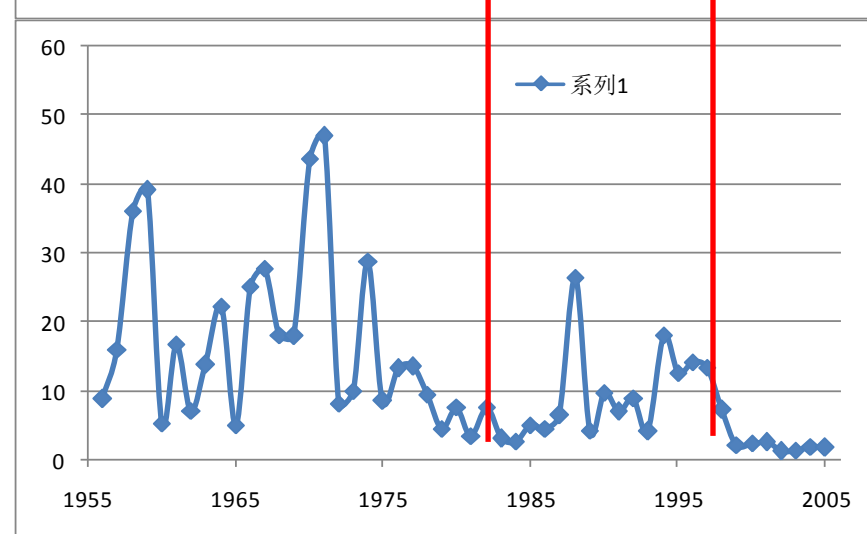
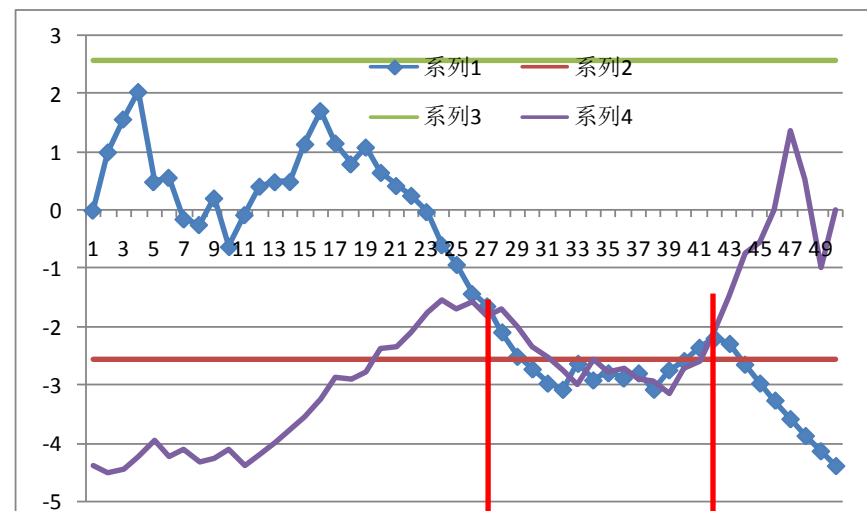
2. Tuweihe River, Gaojiachuan gauging station, standardization sediment load

2. 秃尾河高家川输沙



1978

1997

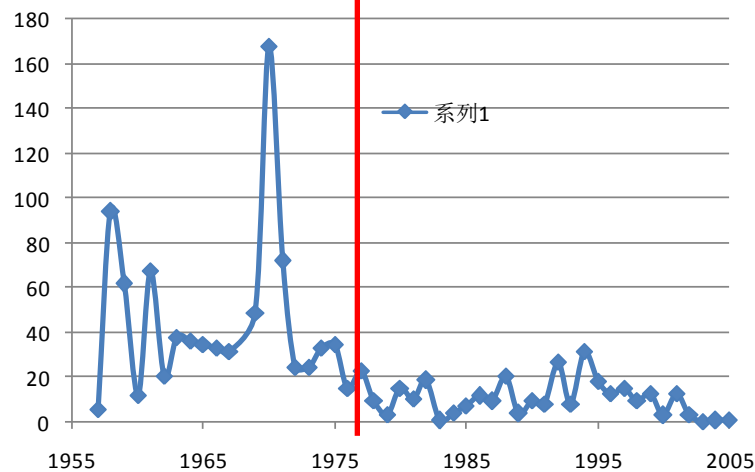
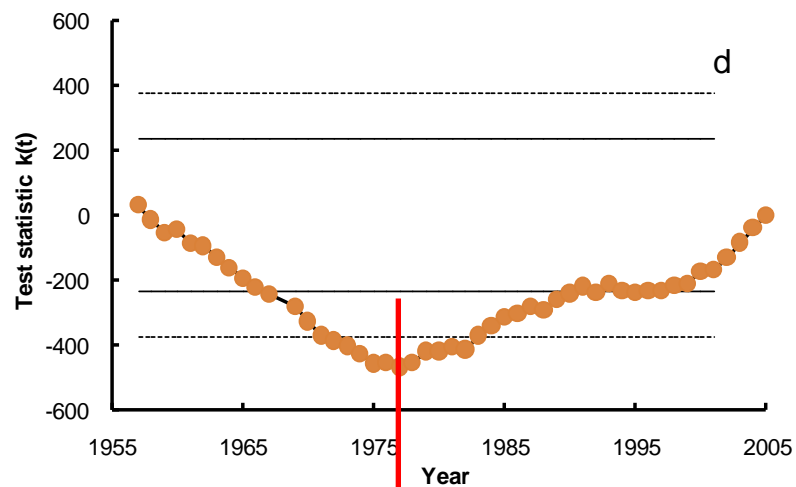


1982

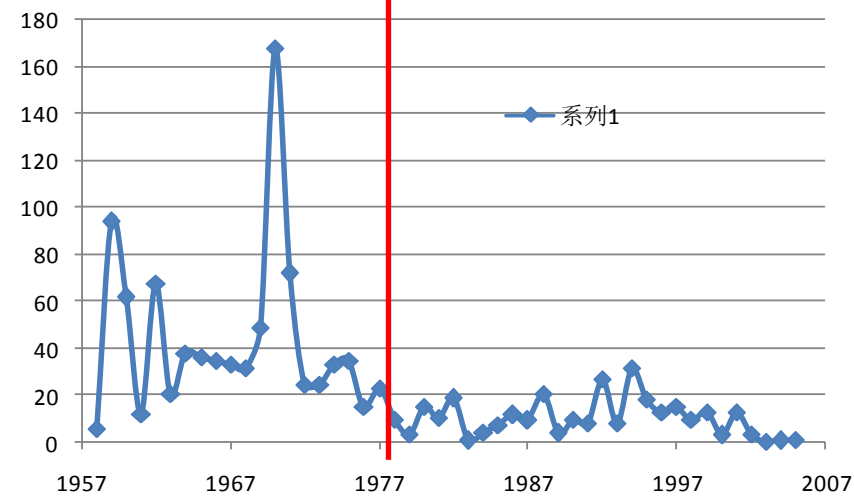
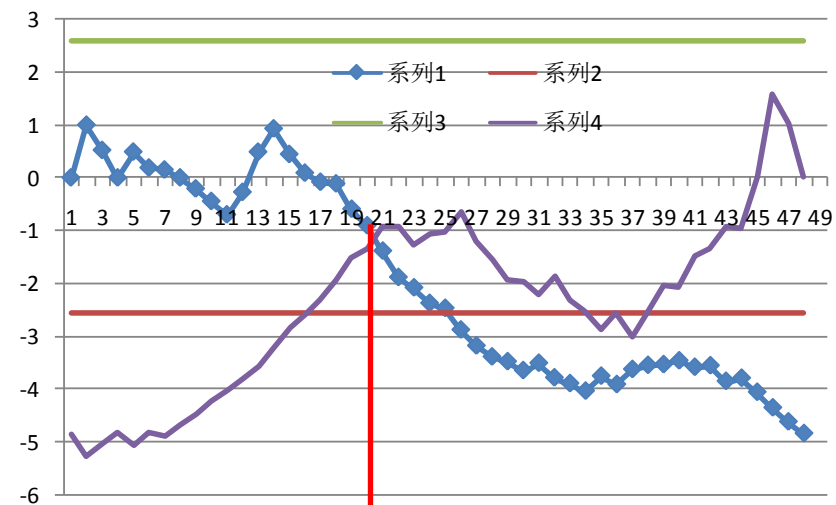
1998

3. Jialuhe River, Shenjiawan gauging station, standardization sediment load

3. 佳芦河申家湾 输沙



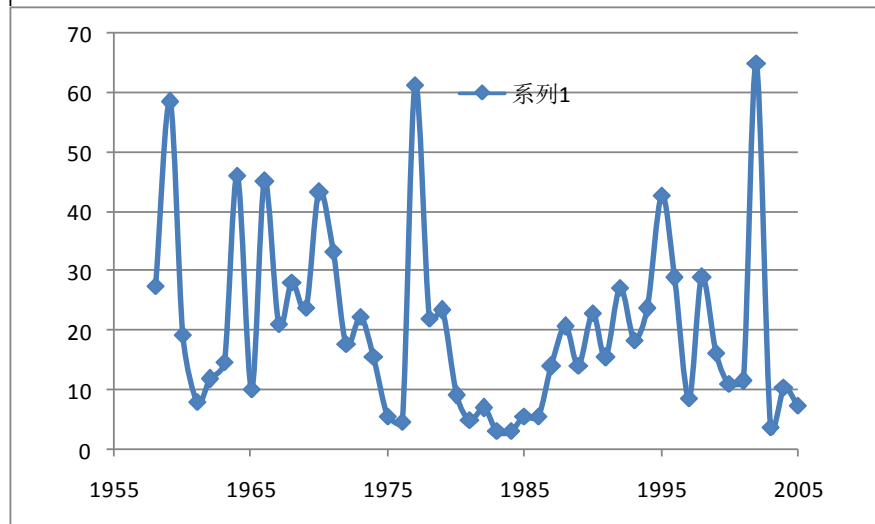
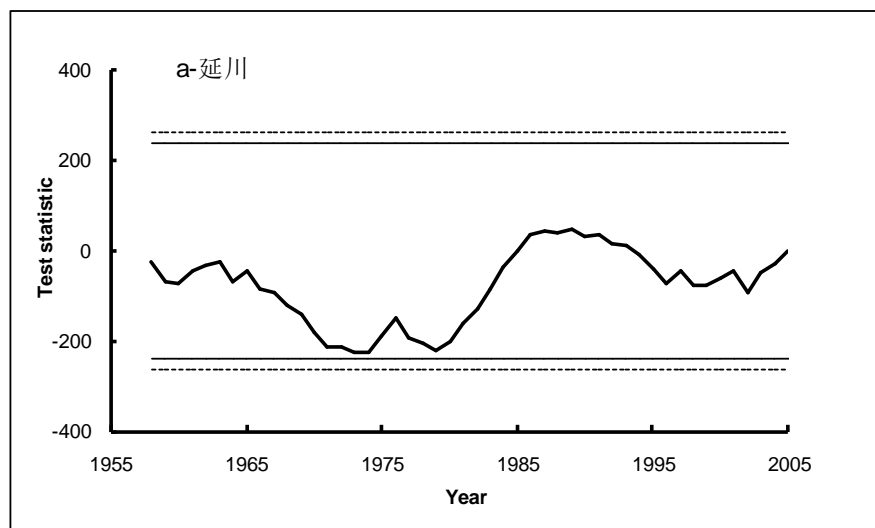
1977



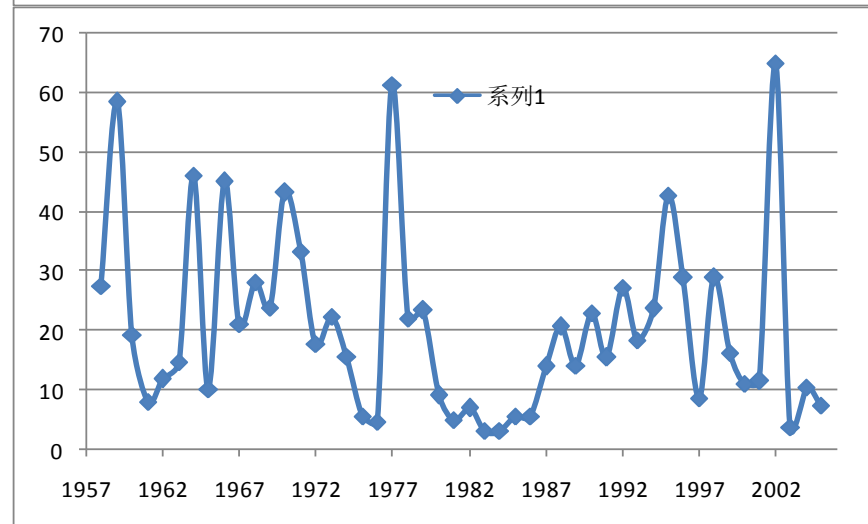
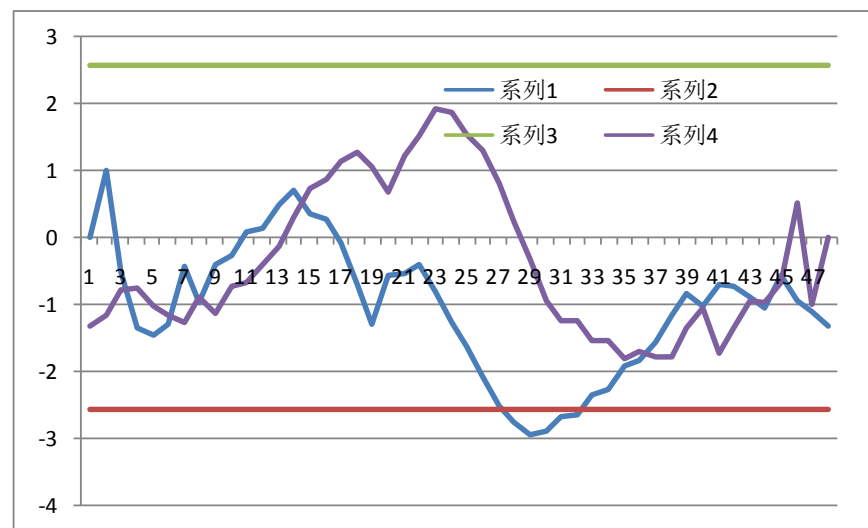
1977

4. Qingjianhe River, Yanchuan gauging station, standardization sediment load

4. 清
涧
河
延
川
输
沙



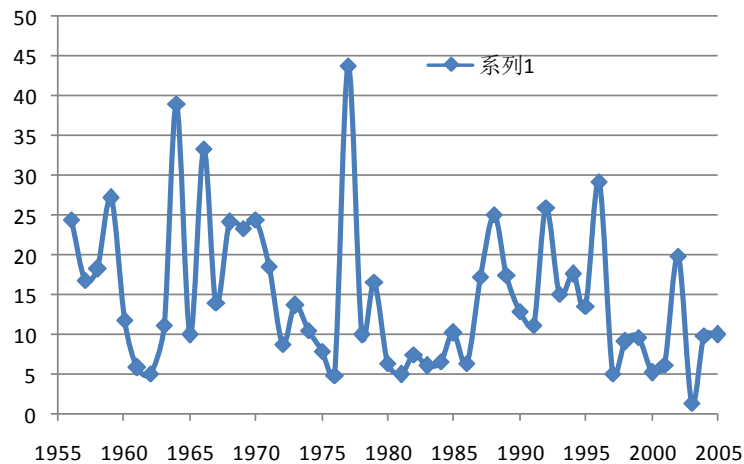
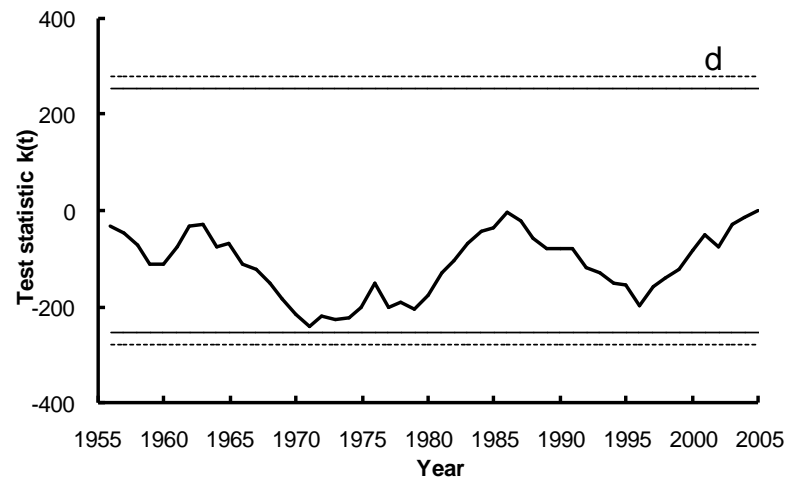
No change point detected



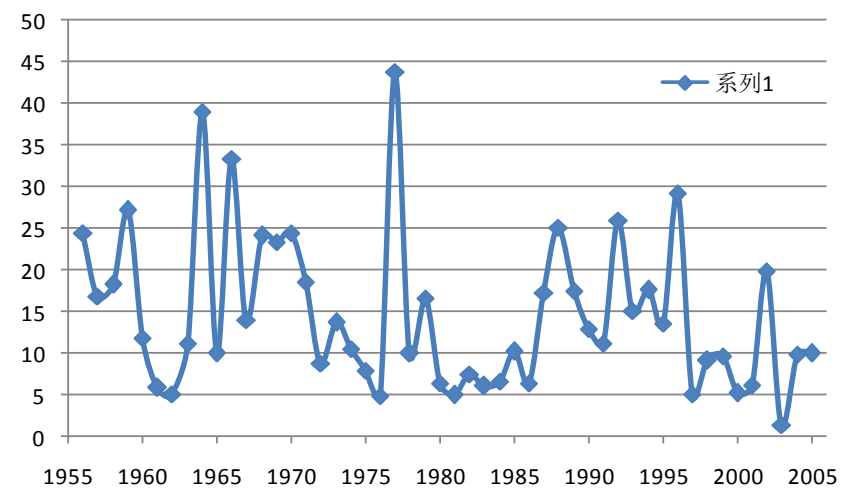
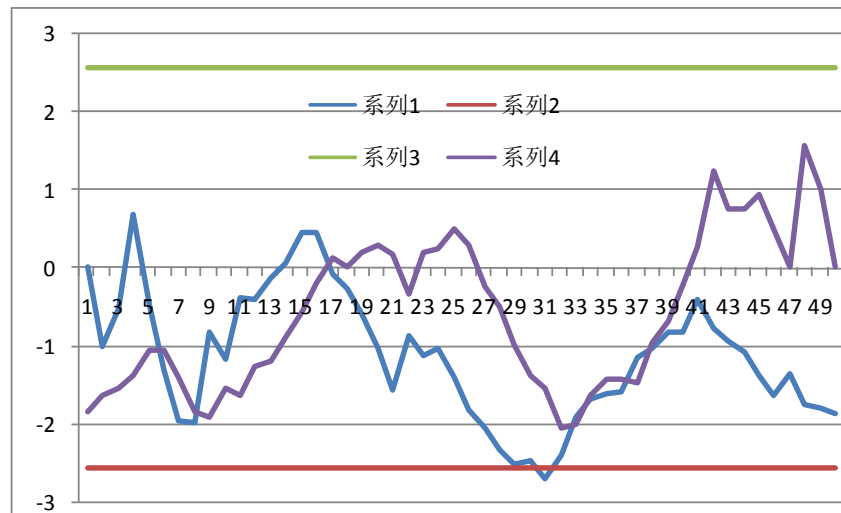
No change point detected

5. Yanhe River, Ganguyi gauging station, standardization sediment load

5.
延
河
输
沙



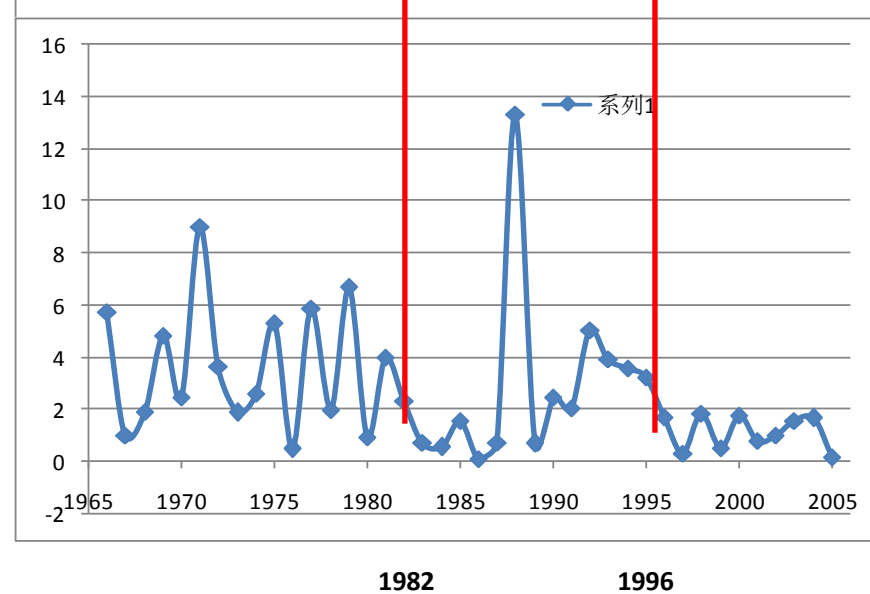
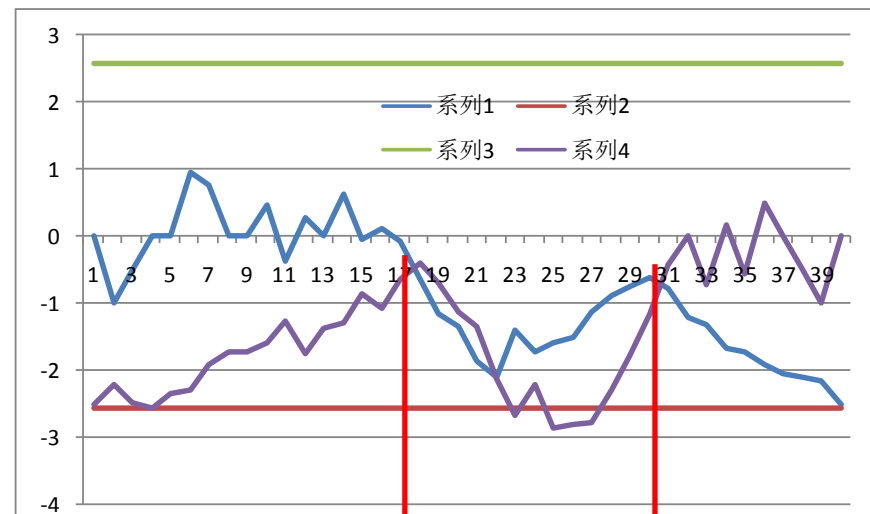
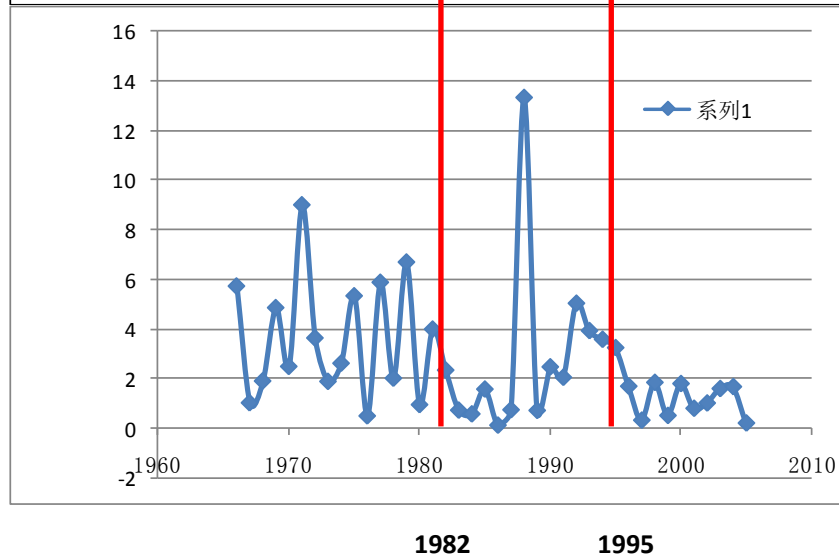
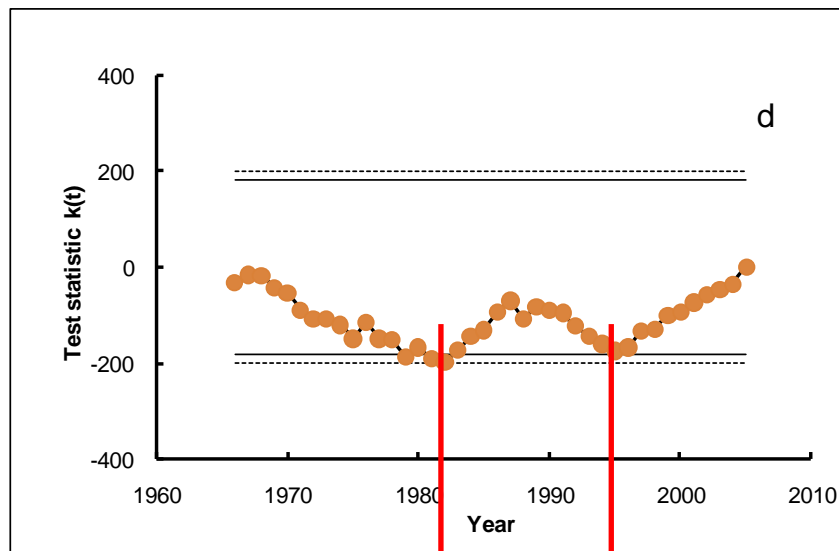
No change point detected



No change point detected

6. Yunyan River, standardization sediment load

6. 云岩河
输沙



7. Shiwangchuan River, standardization sediment load

7. 仕望川
输沙

